



3+



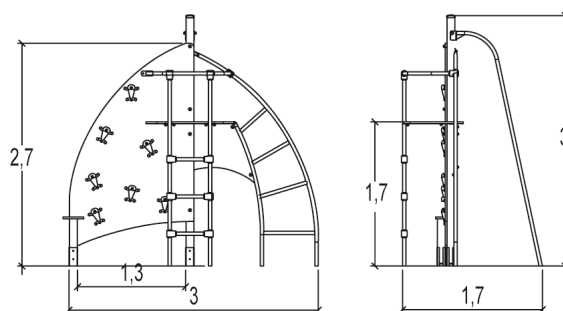
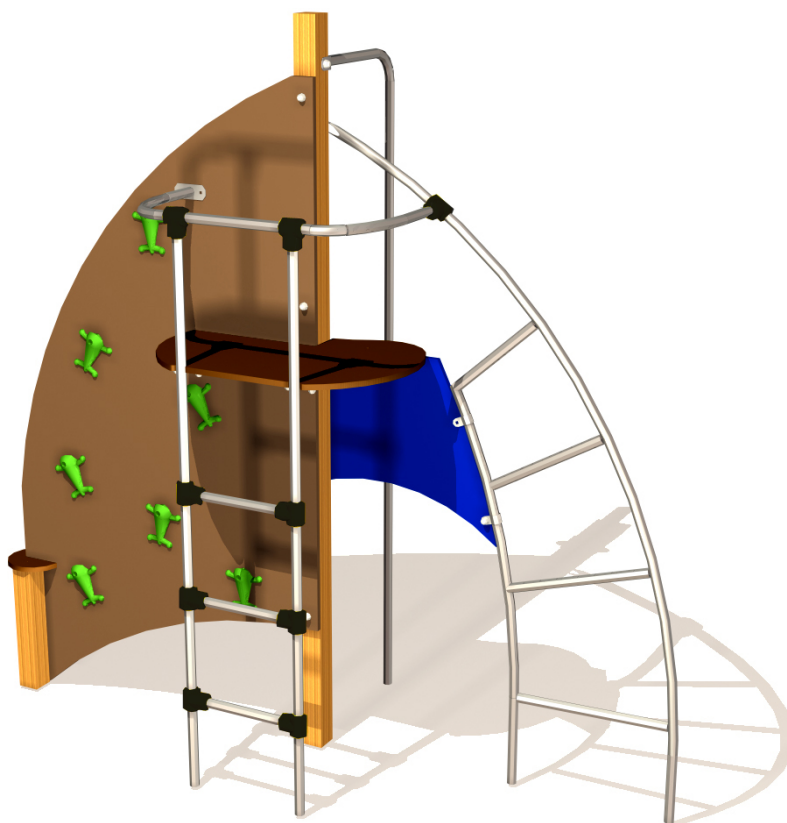
11



2,7m



1 = 3m 2 = 1,85m 3 = 3m



Fonctions ludiques : 4

escalader



x1

glisser

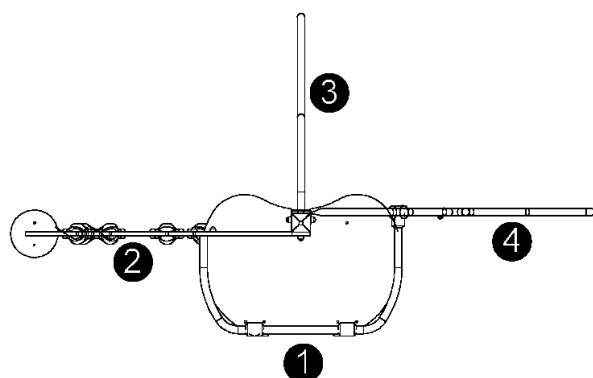


x1

grimper



x2

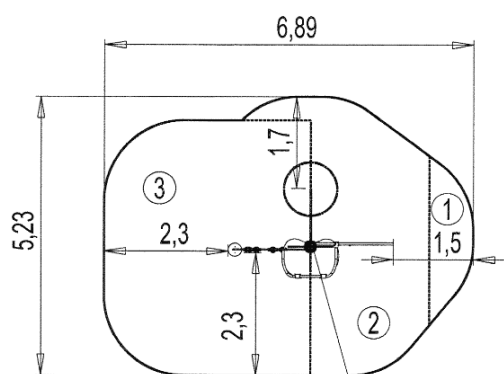


- ❶ Echelle à grimper
- ❷ Mur d'escalade
- ❸ Mât à glisser
- ❹ Echelle cintrée

Installation de l'équipement

Zone d'impact : Surface de sol minimale requise

—— Zone d'impact
- - - Espace libre



Point de Référence
Setting Out Point
Punto de referencia
Bezugspunkt
Referentiepunt

1	0,6m	2m ²
2	1,8m	11m ²
3	2,7m	18m ²



2



06h15



0.3m³



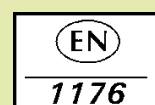
31m²



139kg



42kg



Proludic

2012-11-29