



3+



20



2m



1 = 5,43m 2 = 2,71m 3 = 2,9m



Fonctions ludiques : 10

escalader



x1

glisser



x1

se rencontrer



x1

se reposer



x1

manipuler



x1

s'abriter



x1

grimper

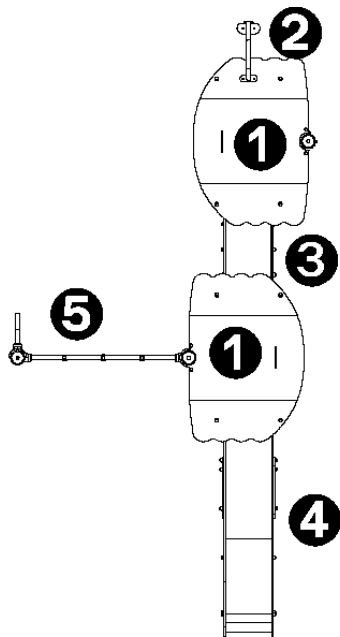


x3

traverser



x1

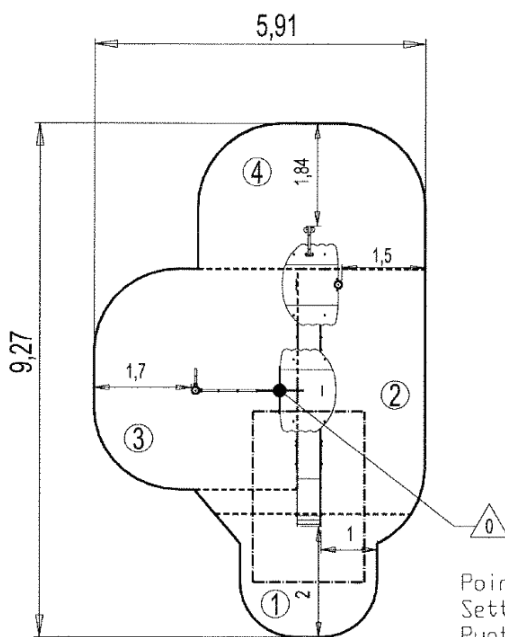


- ❶ Tour H : 1,17 m
- ❷ Mât cocotier
- ❸ Passerelle
- ❹ Toboggan Ht : 1,17 m
- ❺ Filet
- ❻ Poteau
- ❼ Renfort Poteau
- ❽ Mur d'escalade



## Installation de l'équipement

**Zone d'impact : Surface de sol minimale requise**

-  Zone d'impact
-  Espace libre



Point de Référence  
Setting Out Point  
Punto de referencia  
Bezugspunkt

		
1	1m	5,5m <sup>2</sup>
2	1,17m	12m <sup>2</sup>
3	1,8m	13,5m <sup>2</sup>
4	2m	10m <sup>2</sup>



2



16h00



0.26m<sup>3</sup>



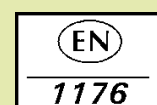
41m<sup>2</sup>



367kg



33kg



*Proludic*

2009-01-01